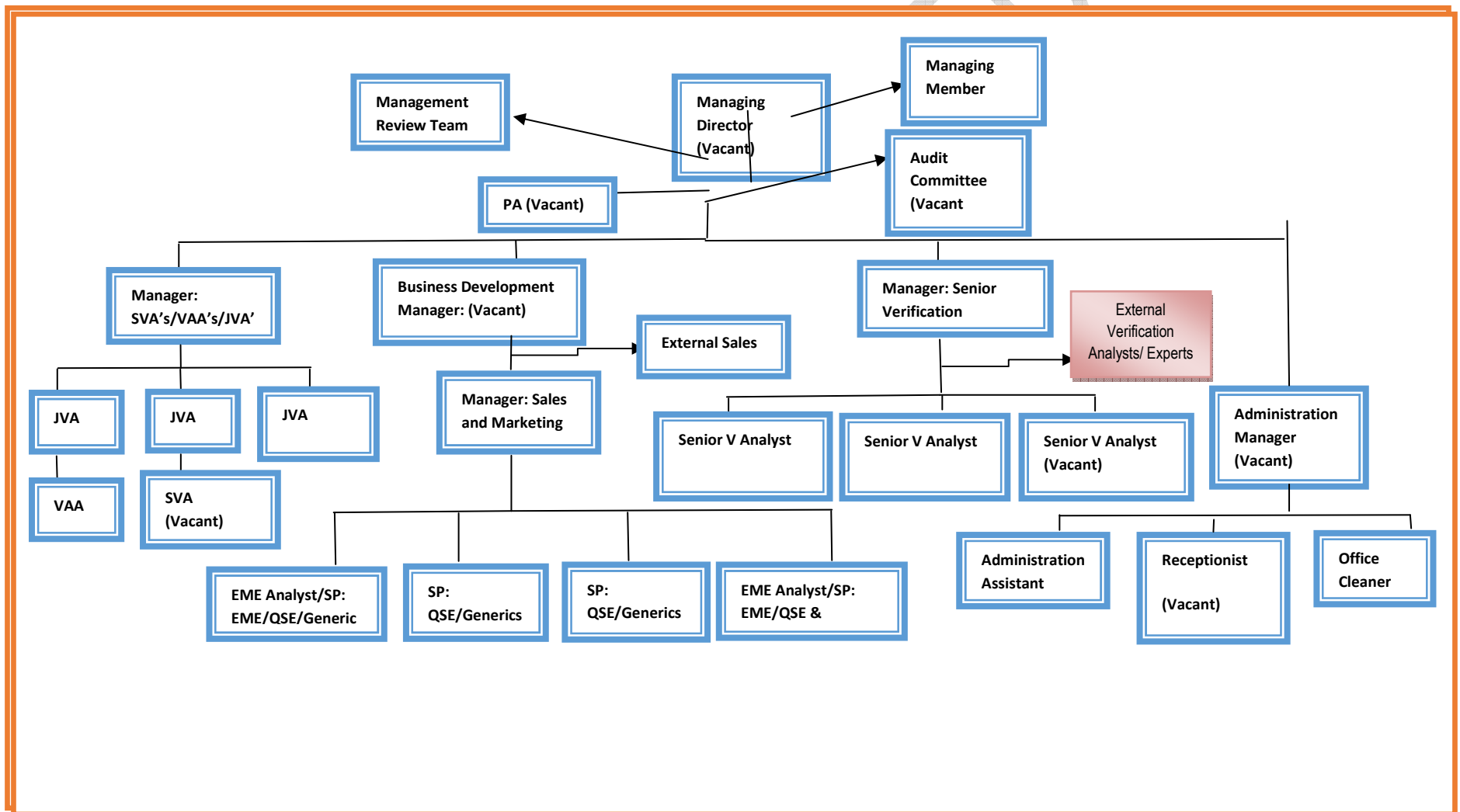


<b>PROCEDURE MANUAL</b>	<b>Doc Ref No: BEE/MP/5/A1</b>
<b>Title: Organogram</b>	<b>Revision No: 06</b>
<b>Copy No: 01</b>	<b>Page: 1 of 1</b>
<b>Compiler: L Frank</b>	<b>Date Compiled: 30 June 2015</b>
<b>Approver: S Rossouw</b>	<b>Effective date: 14 July 2015</b>



<b>PROCEDURE MANUAL</b>	<b>Doc Ref No: BEE/MP/5/A1</b>
<b>Title: Organogram</b>	<b>Revision No: 06</b>
<b>Copy No: 01</b>	<b>Page: 1 of 1</b>
<b>Compiler: L Frank</b>	<b>Date Compiled: 30 June 2015</b>
<b>Approver: S Rossouw</b>	<b>Effective date: 14 July 2015</b>

### BEE EMPOWERED ORGANOGRAM

#### **DEFINITIONS:**

1. Top Management, means the Managing Member of BEE Empowered and Labour Consultancy CC and the Managing Director;
2. Manager: SVA's/VAA's/JVA's, means the Manager: Supplier Verification Analysts/Verification Analyst Assistants/Junior Verification Analysts;
3. "JVA", means Junior Verification Analyst;
4. "SVA", means the Supplier Verification Analysts;
5. "VAA", means the Verification Analyst Assistant;
6. "EME Analyst/SP: EME's/QSE's/Generics", means the EME Analyst and Sales Person: EME's/QSE's/Generic's
7. SP: QSE/Generics" means Sales Person: QSE's and Generics;
8. "Senior V Analyst/s", means Senior Verification Analyst/s;